

Partnership Working & Sustaining its Commitments



Who Are We ?



The Billingshurst Partnership is a **group of volunteers** who are dedicated to delivering **projects to enhance the well-being of Billingshurst** and its surroundings. The members are **representative of the various local organizations** and they undertake many of their projects in conjunction with those organizations and the Local Authorities. Because of the size and value of some of the projects the **Partnership is a Company limited by guarantee and managed by a board of directors.**

The Partnership **Management team** consists of **18 members** who are elected at an AGM and who have been nominated by the participating organizations or who volunteer to stand as an individual. Hence any parishioner is eligible to stand for election as long as he or she agrees to the objectives and aims of the Partnership. The election is independently adjudicated.

Our Commitments

“The Action Plan”

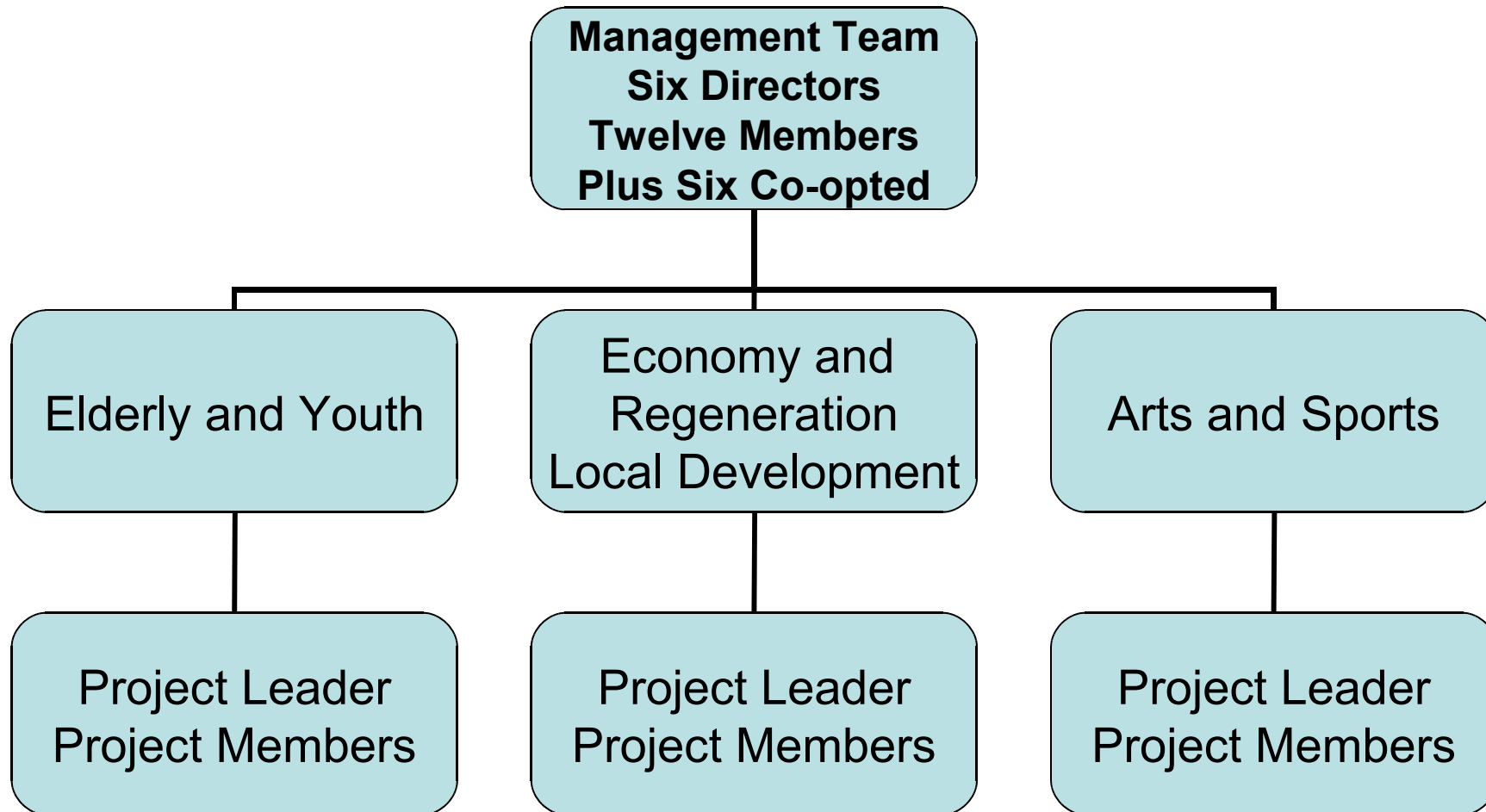
The work to create the first Billingshurst Community Action Plan commenced in 2002, when the Parish Council, in conjunction with a number of community groups, commenced a “Healthcheck” process under the guidance of the Countryside Agency.

This process, involved the collection of data and public consultations, resulted in several projects, all of which were addressed and are now completed.

The next phase of the Community Action Plan seeks to address a new set of projects, some of which are a natural progression from the 2002 plan and which have been identified as a result of public consultation exercises. This plan is expected to be delivered from 2008 to 2012.

How are we Organised

A Company Ltd by Guarantee



Key Achievements

Since its formation in 2002 the Partnership has raised over £300,000 to finance those projects that it has undertaken so far.

The Partnership continues to work on a number of initiatives and forums that were identified in the first (2002) Action

- **Safety and Security** – It has a representative on the Billingshurst Action Initiative Team
- **Care of the Young, Elderly and those who are disadvantaged.** The Partnership has established and runs a Youth Club on Monday evenings (TAG) and provides a Luncheon Club for the older generation at the village hall on a regular basis. It also has a representative who works with the Disadvantaged in the Community and beyond (Headway)
- **Local transport** – The Partnership has continuing representation with two community transport schemes
- **Sports and Recreation** – It has led and sourced over £100,000 towards the Burnt Row Woodland and the Fishing Lake, and continues to give direct support to these projects and works with the Billingshurst Sports and Recreation Association supporting the Jubilee Fields complex overall
- The Partnership has supported the an **Early Years facility** and has delivered £120,000 of funds, and project support, toward the new £750,000 project for a **Family and Children's Centre** This will provide extended services for children and families.

THE PROJECTS for 2008 to 2012



Based on the consultation exercise the Partnership will address the following themes to focus on over the next period 2008 to 2012.

- Youth (For example the provision of a new Skate Park and Youth Centre. Continue the Youth Club. An EU project involving three countries)
- Environment (including Sports and Leisure)
- Local Economy (Formulation of a Chamber of Commerce. Working to make Billingshurst a sustainable hub and Improving the Retail offering such as a Community Shop.)
- Arts and Culture (Performing Arts and Local Artists)

Finance



Finance for the projects comes from various sources, but in the main from **direct grants to the Partnership** that it can then use to fund joint projects for the community. **Horsham District Council** (HDC) and **Billingshurst Parish Council**. **However** (BPC) are able to access **Section 106 funds** (monies that are gained from the Developers and held by the District Council), as is the Partnership, but **in addition the Partnership** is also able to **raise finance** from, amongst others, **Landfill Tax Credits – the Heritage Fund – the Arts Council – Viridor Community Fund – the Lottery – The Sports Council and many other independent grant providers including the South East Economic Development Agency (SEEDA) and Action in Rural Sussex (AIRS).**

The **Parish Council** supports many applications made by the Partnership for funding and often will agree to **sponsor** them by contributing towards an application that requires an upfront financial donation. It also will give a **direct cash donation** to a project where the Partnership is unable to raise sufficient funds to cover the entire requirement or where in the lifetime of the project unforeseen issues arise.

Sustain and the Challenges

Volunteers are the Key to the success of the Partnership

The Mix From as wider section of the Community as is possible. Clubs such as (Rotary – Lions) Associations (Sports and Leisure; Churches; Local Schools and Individuals.

Plus the Authorities Local Parish, District and County.

Of our eighteen members we **reserve one place** for a representative from each of these **key organisations**.

Talk to the leaders of these organisations to make certain they understand the objectives of the Partnership.

Commitment from the Partners of the members. This support is key

since it takes time, energy and an individual's finance to sustain commitment to the projects

New Blood. Bring New Ideas but keep focused on the projects in hand and agreed.

Core Team

Small - Dedicated Focused and United !

Its Skills:

Management

Financial

Admin

Secretariat

Management **Team**

- A wide membership representing as many of the key local “movers and shakers” as is possible **PLUS** a representative from the Parish District and County councils (**We reserve one place per authority out of eighteen members**).
- The Project Champions! These are absolutely key to the success of the ongoing projects.
- The “Champions” **Must** have Passion and Staying Power; Time and energy to meet the challenges.
- The Management Team meets on a regular basis to review and comment on progress
- New Projects **Must** be agreed by the Directors and then by the Management Team

Projects

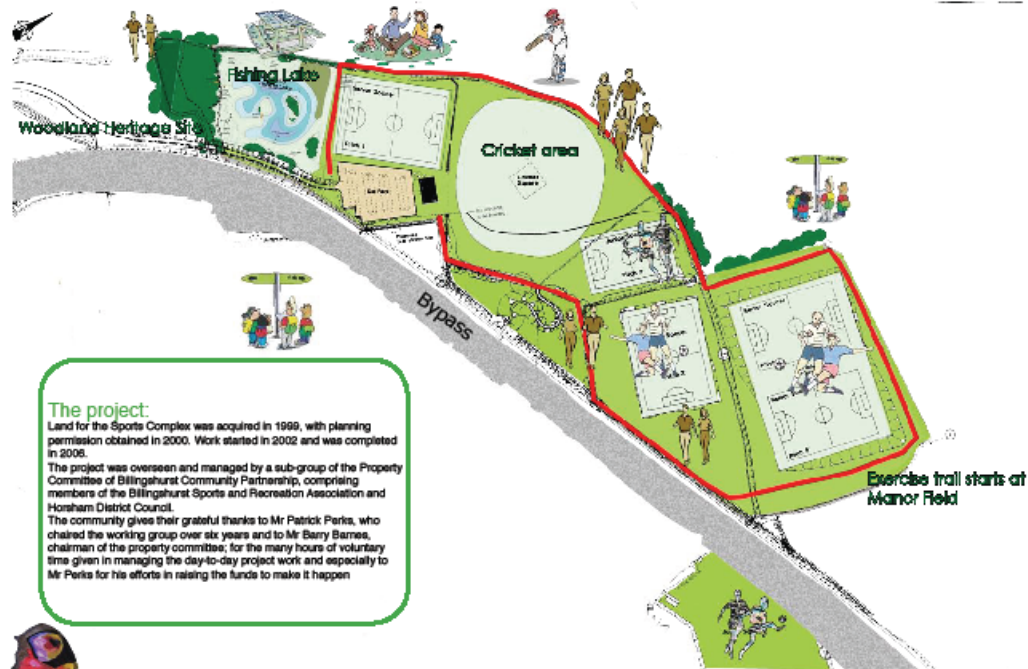
- **Must be in the public domain so that they are understood by the community at large.**
- **Communication is key but difficult to reach all. Methods used - Web Site, Local Press, Reporting to Parish Council on a regular basis.**
- **Retain the support of the Authorities that is to say Parish – District and County.**
- **Meet the negatives head on.**

Meeting the Negatives head on.

- Some of the People and All of the People!
- Can be seen to dominate local affairs.
- If set up in a “Professional” way (**It IS a business and requires business acumen to succeed**) then it can move fast as it has no impediments to act as a deterrent to its plans.
- Decision making has corporate agreement.
- This “speed of reaction” is often seen as usurping local elected councillors authority.
- Hence the regular report to the local council is germane to the success of the Partnership.
- **PARTNERSHIP** has to be stressed and reiterated many times.



Jubilee Fields Sports Complex



The project

Land for the Sports Complex was acquired in 1969, with planning permission obtained in 2000. Work started in 2002 and was completed in 2008.

The project was overseen and managed by a sub-group of the Property Committee of Billingshurst Community Partnership, comprising members of the Billingshurst Sports and Recreation Association and Horsham District Council.

The community gives their grateful thanks to Mr Patrick Perks, who chaired the working group over six years and to Mr Barry Barnes, chairman of the property committee; for the many hours of voluntary time given in managing the day-to-day project work and especially to Mr Perks for his efforts in raising the funds to make it happen



Recreation area to encourage sports and leisure activities for local families and visitors





